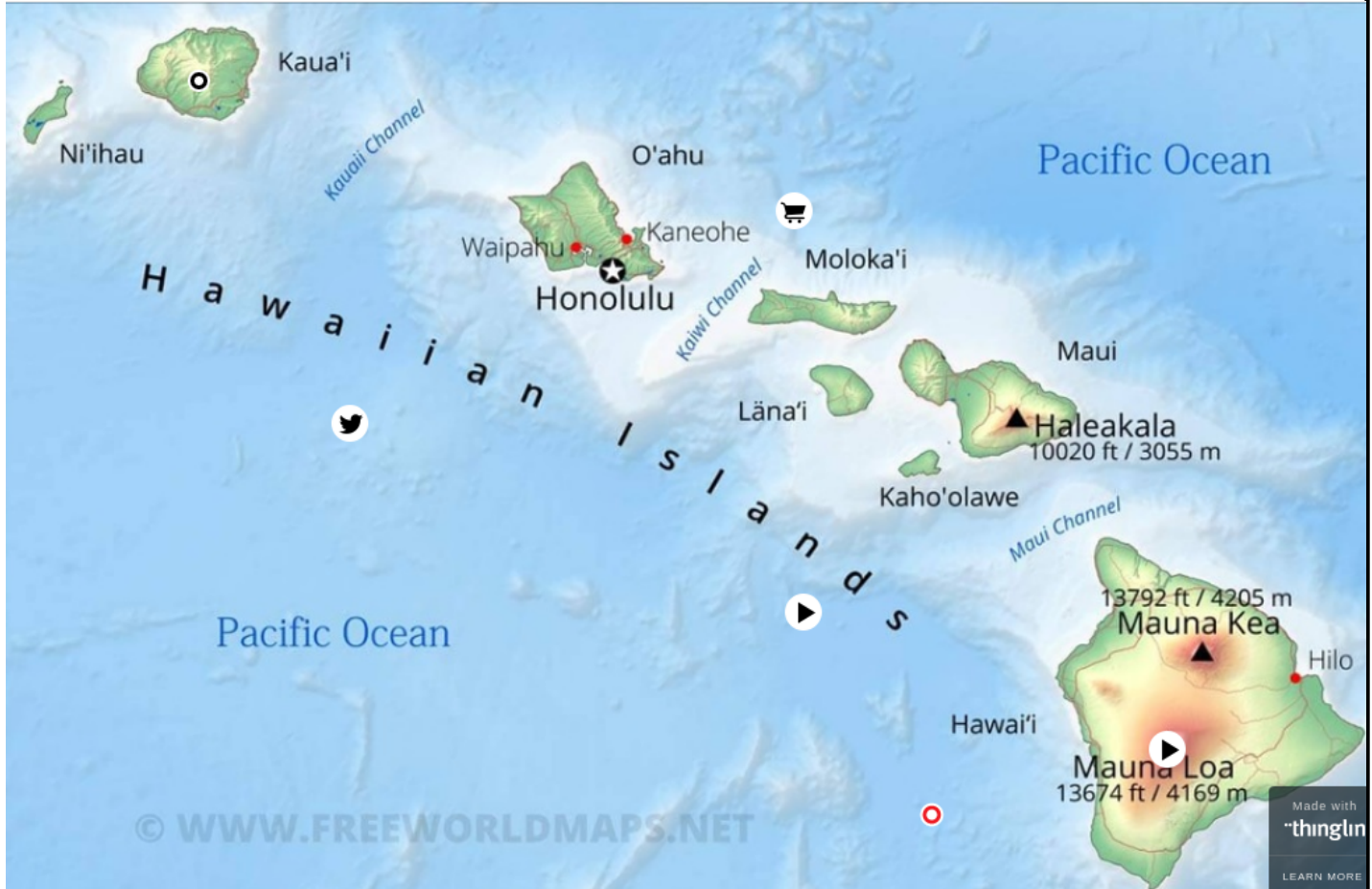


## INCIDENT BRIEFING (ICS 201)

<b>1. Incident Name:</b> Kawailani 'Ino Hawaii (Drill)	<b>2. Incident Number:</b> ARES-2022-01	<b>3. Date/Time Initiated:</b> Date: 4/16/2022 Time: 0900 HST
---	--	--

**4. Map/Sketch** (include sketch, showing the total area of operations, the incident site/area, impacted and threatened areas, overflight results, trajectories, impacted shorelines, or other graphics depicting situational status and resource assignment):



**5. Situation Summary and Health and Safety Briefing** (for briefings or transfer of command):

**Simulated heavy rain and wind event.**

The National Weather Service, Honolulu Field Office predicts that this storm will travel from Kauai to Hawaii County over the next 4 days, impacting the entire state with sustained winds of 45-60 MPH, and gusts up to 75 MPH. Between 48 and 72" of rain is expected to fall in a 24-36 hour period over each island. Power and telephone services are out in Kauai County. Grid power is anticipated to be out islandwide as the storm passes over each island. If in a safe location where you may operate from, remain in place. Stations in areas that have not yet been impacted are advised to proceed to a safe location. Stand-up communications on emergency power. The EOC on Kauai has been activated, and the Oahu EOC is in the process of activating. The EOC on Maui and Hawaii County Civil Defense Agency-ACS is expected to be activated by simulation day 2.

**6. Prepared by:** Name: Tony Kitchen Position/Title: Planning Section Chief Signature: /s/Tony Kitchen

<b>1. Incident Name:</b> Kawaiilani 'Ino Hawaii (Drill)	<b>2. Incident Number:</b> ARES-2022-01	<b>3. Date/Time Initiated:</b> Date: 4/16/2022    Time: 0900 HST
--	--	---

**7. Current and Planned Objectives:**

- A. Receive and relay messages from EOC.  
Assist all stations in maintaining situational awareness.
- B. Draft message traffic/complete form(s) with essential elements of information based on inject(s)
- C. Transmit messages/forms to or towards applicable EOC via voice or Winlink.
- D. All stations to log message traffic on ICS-309.
- E. If confirmation of message receipt was not delivered directly to spoke from the EOC, pass confirmation to spoke station and record the time relay confirmation was made on hub/relay station ICS-309.
- F. Observe and relay band conditions to hub stations, EOC, and other operators. (HF operators)
- G. Assist other stations as needed.
- H. Submit ICS-309 logs to your planning team member on your island at the end of the exercise.  
(Refer to ICS-204/205 forms for detail of assignments and communication plans)

**0900 Station setup and Check-ins**

0910-1200 HST. Copy/record/relay simulated messages from NWS, EAM(s) from EOC.

0910-1100 HST. Stations on **Kauai**: Pass message traffic from injects.

0940-1130 HST. Stations in **C&C Honolulu & Maui County**: Pass message traffic from injects.

1010-1200 HST. Stations in **Hawaii County**: Pass message traffic from injects.

1300-1400 HST. Attend the Zoom Hotwash Meeting.

<b>8. Current and Planned Actions, Strategies, and Tactics:</b>	
Time:	Actions:
0900-0915	<b>Kauai:</b> EOC & hubs transmit opening messages, begin local nets, take check-ins.
0910-1100	Simulated NWS/EAM messages from EOC. Hubs record and relay this to spokes via VOICE.
0910-1100	Handle injects and transmit messages. Hubs relay messages to EOCs via multiple modes, do relay confirmation.
1101-1115	Hubs & EOC close nets. EOCs have until 1115 to finish/relay confirmation of message receipt.
1116-1130	Hubs collect and complete any remaining relay confirmations to spokes.
0930-0945	<b>C&amp;C Honolulu &amp; Maui:</b> EOC & hubs transmit opening messages, begin local nets, take check-ins.
0940-1130	Simulated NWS/EAM messages from EOC. Hubs record and relay this to spokes via VOICE.
0940-1130	Handle injects and transmit messages. Hubs relay messages to EOCs via multiple modes, do relay confirmation.
1131-1145	Hubs & EOC close nets. EOCs have until 1145 to finish/relay confirmation of message receipt.
1145-1200	Hubs collect and complete any remaining relay confirmations to spokes.
1000-1015	<b>Hawaii County:</b> EOC & hubs transmit opening messages, begin local nets, take check-ins.
1010-1130	Simulated NWS/EAM messages from EOC. Hubs record and relay this to spokes via VOICE.
1010-1130	Handle injects and transmit messages. Hubs relay messages to EOCs via multiple modes, do relay confirmation.
1131-1145	Hubs & EOC close nets. EOCs have until 1145 to finish/relay confirmation of message receipt.
1145-1200	Hubs collect and complete any remaining relay confirmations to spokes.
1300-1400	<b>All Participants:</b> Participate in Hot Wash on Zoom

<b>6. Prepared by:</b> Name: Tony Kitchen	Position/Title: Planning Section Chief	Signature: /s/Tony Kitchen
---	--	----------------------------

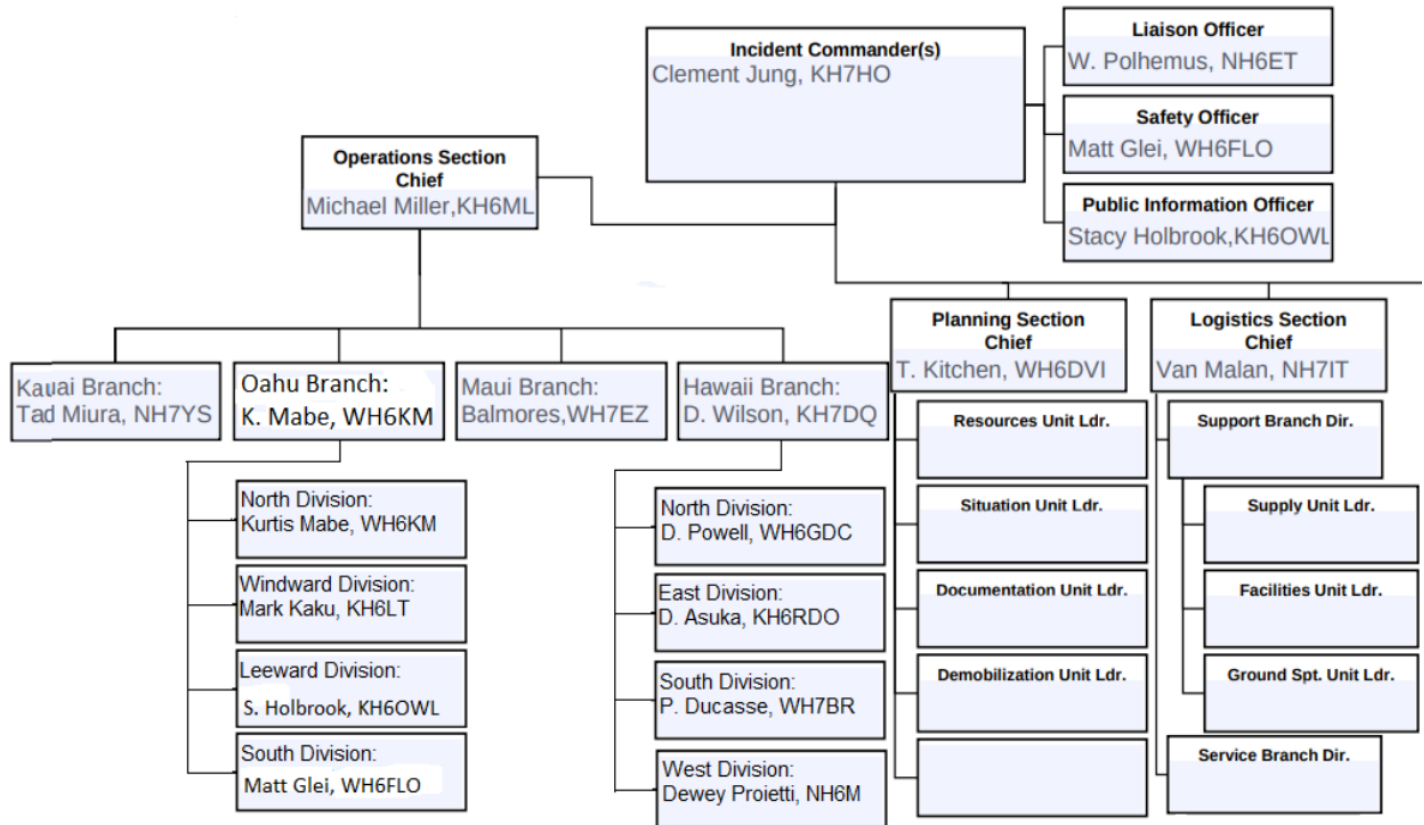
<b>ICS 201, Page 2</b>	Date/Time: 4/13/2022 @ 0200 HST
------------------------	---------------------------------

**1. Incident Name:**  
Kawailani 'Ino Hawaii (Drill)

**2. Incident Number:**  
ARES 2022-01

**3. Date/Time Initiated:**  
Date: 4/16/2022 Time: 0900 HST

**9. Current Organization**



**6. Prepared by:** Name: Tony Kitchen Position/Title: Planning Section Chief Signature: /s/Tony Kitchen

<b>1. Incident Name:</b> Kawailani 'Ino Hawaii (Drill)		<b>2. Incident Number:</b> <b>ARES 2022-01</b>		<b>3. Date/Time Initiated:</b> Date: 4/16/2022    Time: 0900 HST	
<b>10. Resource Summary:</b>					
Resource	Resource Identifier	Date/Time Ordered	ETA	Arrived	Notes (location/assignment/status)
EOC Kauai		4/16/2022 @0300	0900 HST		Nukolii Beach Park
EOC C&C Honolulu		4/16/2022 @0500	0930 HST		Frank Fasi Bldg & Palolo Valley Home QTH (AH6T)
EOC Maui		4/16/2022 @0600	0930 HST		Maui EMA, Wailuku
ACS Hawaii		4/16/2022 @0630	1000 HST		Volcano Village, Hawaii County
<b>6. Prepared by:</b> Name: <u>Tony Kitchen</u> Position/Title: <u>Planning Section Chief</u> Signature: <u>/s/Tony Kitchen</u>					
<b>ICS 201, Page 4</b>		Date/Time: <u>4/13/2022 @0245 HST</u>			